

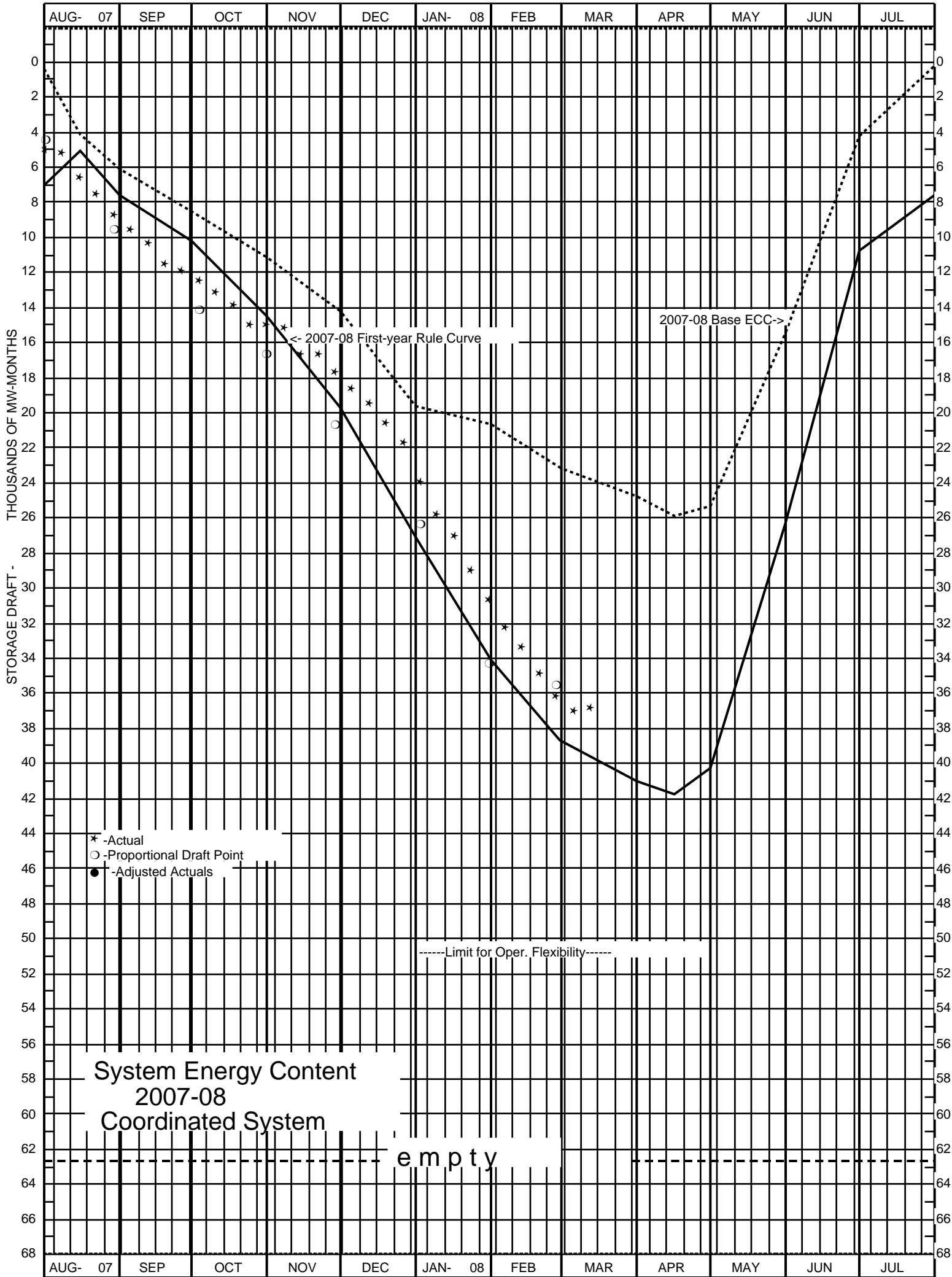


STATUS OF STORAGE ENERGY**
 WEEK ENDING WEDNESDAY, JAN. 9, 2008

	STORAGE ENERGY DRAFT (MW-MOS.)			
	CRITICAL RULE CURVE	ENERGY CONTENT CURVE	PROPORTIONAL DRAFT LEVEL*	ACTUAL
PPL MONTANA	514	349	446	465
PACIFIC	860	591	844	751
PORTLAND GENERAL	679	436	664	600
PUGET POWER	1278	910	1253	1114
AVISTA	868	633	779	763
CHELAN	540	416	497	467
COLOCKUM	567	390	555	490
GRANT	1533	1055	1500	1326
DOUGLAS	46	31	45	39
COWLITZ	1383	957	1375	1177
SEATTLE	1372	1181	1237	763
TACOMA	555	212	390	460
EUGENE	81	44	81	77
FEDERAL COLUMBIA RIVER POWER SYSTEM	19379	12896	19004	17256
COORDINATED SYSTEM	29661	20109	28676	25755
N.W.P.P. (U.S. PORTION ONLY)	29755	20203	*****	26340

** BASED ON RESERVOIR SITUATION ONLY; DOES NOT INCLUDE ADJUSTMENTS FOR SYSTEM RIGHTS AND OBLIGATIONS WHICH MAY DIFFER FROM THOSE GIVEN IN OPERATING PROGRAM.

* BASED ON MAR 24, 2008 ACTUAL ENERGY REGULATION.



STORAGE RESERVOIRS DATA
Week Ending Wednesday, January 9, 2008

Reservoir	Full	Rule Curve	ECC	Actual	Feet Draft From Full
American Falls	4354.5	0.0	0.0	4336.0	18.5
Amer. F. - MW-Mos.	0.0			0.0	
Bear Lake	5923.6	0.0	0.0	5907.7	15.9
Hebgen	6534.9	6534.9	6534.9	6526.8	8.1
Madison Gauge	9.5	9.5	9.5	9.5	
Canyon Ferry	3797.0	3797.0	3797.0	3783.0	14.0
Hungry Horse	3560.0	3513.4	3539.4	3524.0	36.0
Flathead	2893.0	2887.4	2887.4	2887.0	6.0
Noxon	2331.0	2329.8	2329.8	2328.4	2.6
Pend Oreille	2062.5	2055.0	2055.0	2055.6	6.9
Libby	2459.0	2425.6	2425.6	2410.3	48.8
Duncan	1892.0	1858.2	1859.0	1845.5	46.5
Kootenay	1745.3	1744.9	1745.3	1743.7	1.6
Mica	2475.0	2430.3	2468.2	2429.8	45.2
Arrow Lakes	1444.0	1392.9	1398.2	1419.2	24.8
Coeur d'Alene	2128.0	2120.5	2120.5	2121.9	6.1
Long Lake	1536.0	1526.0	1526.0	1533.4	2.6
Grand Coulee	1290.0	1282.9	1282.9	1281.8	8.3
Chelan	1100.0	1087.7	1088.3	1089.4	10.6
Brownlee	2077.0	2066.7	2066.7	2064.0	13.0
Dworshak	1600.0	1512.7	1550.2	1521.2	78.8
Upper Baker	724.0	695.0	695.0	697.2	26.8
Lower Baker	438.0	404.7	404.7	423.7	14.3
White	543.0	543.0	543.0	538.4	4.6
Ross	1602.5	1568.3	1568.3	1723.2	-120.7
Alder	1207.0	1183.0	1204.9	1185.4	21.6
Cushman	738.0	670.1	692.5	713.7	24.3
Mossyrock	778.5	733.3	772.6	728.3	50.2
Swift	1000.0	924.9	924.9	968.5	31.5
Yale	490.0	445.5	445.5	474.0	16.0
Merwin	239.6	233.9	233.9	232.8	6.8
Klamath	4143.3	4139.9	4141.4	4140.0	3.3
Lemolo	4148.5	4133.2	4133.2	4125.3	23.2
Timothy	3190.0	3180.0	3180.0	3178.9	11.1
Round Butte	1945.0	1938.0	1938.3	1937.8	7.2
Hills Creek	1541.0	1447.5	1541.0	1456.6	84.4
Green Peter	1010.0	922.0	1010.0	924.1	85.9
Foster	637.0	611.8	637.0	617.0	20.0
Cougar	1690.0	1550.2	1690.0	1534.2	155.8
Detroit	1563.0	1446.0	1563.5	1451.6	111.4
Lookout Point	926.0	819.0	926.0	830.1	95.9
Bridge River	2136.0	2136.0	2136.0	2099.9	36.1
Peace River	2205.0	2200.0	2200.0	2190.0	15.0