



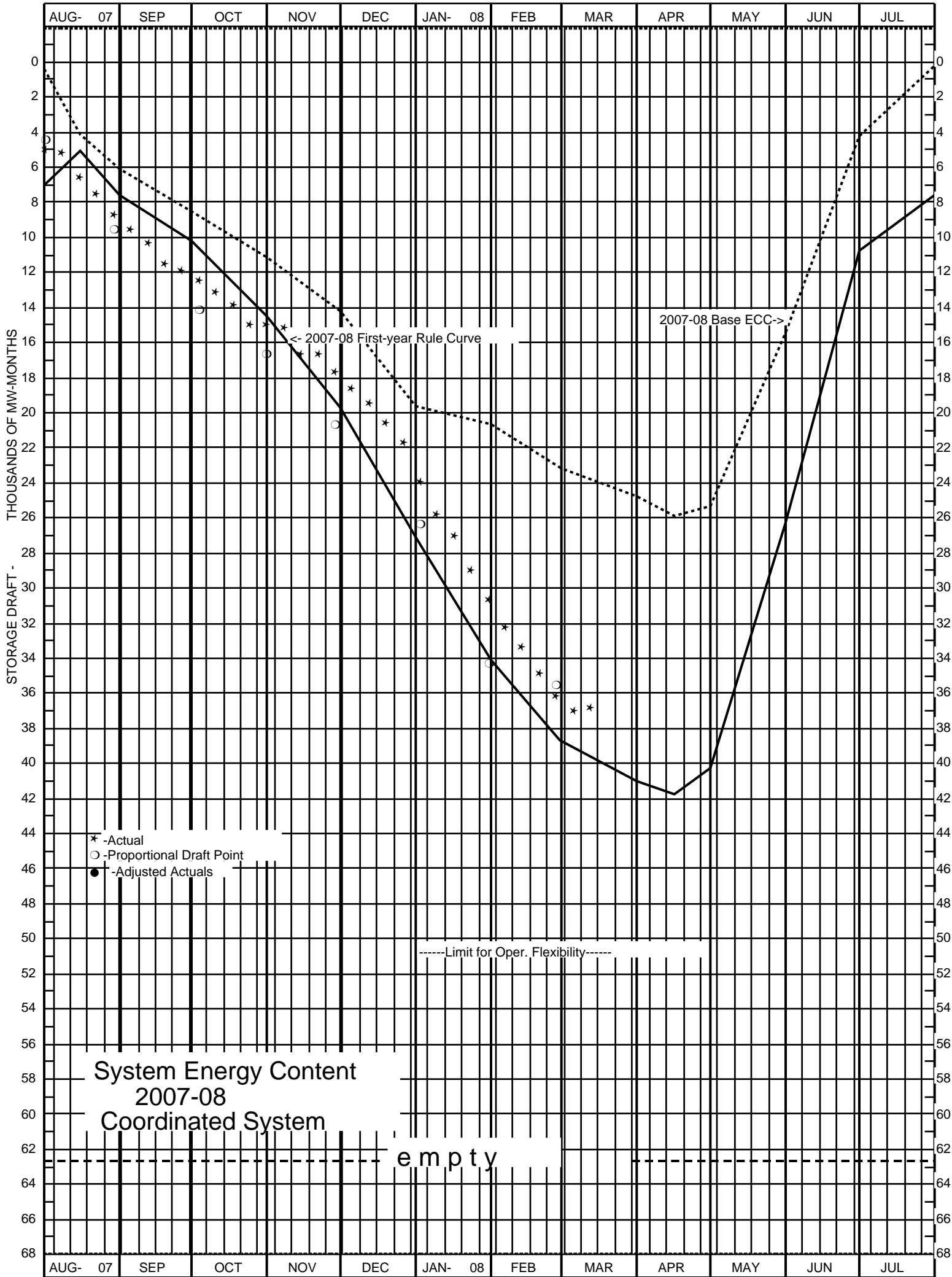
**STATUS OF STORAGE ENERGY\*\***

WEEK ENDING WEDNESDAY, FEB. 27, 2008

	STORAGE ENERGY DRAFT (MW-MOS.)			
	CRITICAL RULE CURVE	ENERGY CONTENT CURVE	PROPORTIONAL DRAFT LEVEL*	ACTUAL
PPL MONTANA	660	338	580	620
PACIFIC	1019	631	1071	880
PORTLAND GENERAL	876	486	874	840
PUGET POWER	1726	1072	1738	1642
AVISTA	1105	659	1009	1029
CHELAN	733	517	699	691
COLOCKUM	765	450	770	728
GRANT	2068	1217	2083	1968
DOUGLAS	62	36	62	59
COWLITZ	1868	1111	1891	1766
SEATTLE	2058	1687	1954	948
TACOMA	1012	141	309	694
EUGENE	98	50	96	99
FEDERAL COLUMBIA RIVER POWER SYSTEM	25219	14655	25337	24171
COORDINATED SYSTEM	39275	23056	38482	36143
N.W.P.P. (U.S. PORTION ONLY)	39536	23317	*****	36997

\*\* BASED ON RESERVOIR SITUATION ONLY; DOES NOT INCLUDE ADJUSTMENTS FOR SYSTEM RIGHTS AND OBLIGATIONS WHICH MAY DIFFER FROM THOSE GIVEN IN OPERATING PROGRAM.

\* BASED ON MAR 24, 2008 ACTUAL ENERGY REGULATION.



STORAGE RESERVOIRS DATA  
Week Ending Wednesday, February 27, 2008

Reservoir	Full	Rule Curve	ECC	Actual	Feet Draft From Full
American Falls	4354.5	0.0	0.0	4343.0	11.5
Amer. F. - MW-Mos.	0.0			0.0	
Bear Lake	5923.6	0.0	0.0	5908.2	15.5
Hebgen	6534.9	6534.9	6534.9	6526.5	8.4
Madison Gauge	9.5	9.5	9.5	9.5	
Canyon Ferry	3797.0	3797.0	3797.0	3781.7	15.3
Hungry Horse	3560.0	3500.8	3552.0	3513.8	46.2
Flathead	2893.0	2885.3	2885.3	2884.4	8.6
Noxon	2331.0	2327.0	2327.0	2327.5	3.5
Pend Oreille	2062.5	2055.0	2055.0	2055.5	7.0
Libby	2459.0	2420.2	2420.2	2400.0	59.0
Duncan	1892.0	1811.8	1838.6	1812.7	79.3
Kootenay	1745.3	1742.5	1745.3	1741.2	4.1
Mica	2475.0	2403.1	2454.8	2413.3	61.7
Arrow Lakes	1444.0	1377.9	1400.5	1405.6	38.4
Coeur d'Alene	2128.0	2120.5	2120.5	2122.0	6.0
Long Lake	1536.0	1522.0	1522.0	1522.7	13.3
Grand Coulee	1290.0	1285.3	1285.3	1258.9	31.1
Chelan	1100.0	1083.0	1083.6	1084.3	15.7
Brownlee	2077.0	2045.4	2045.4	2032.0	45.0
Dworshak	1600.0	1508.8	1548.3	1521.4	78.6
Upper Baker	724.0	677.8	677.8	680.4	43.6
Lower Baker	438.0	392.5	392.5	405.6	32.4
White	543.0	543.0	543.0	541.3	1.7
Ross	1602.5	1526.3	1526.3	1727.6	-125.1
Alder	1207.0	1169.5	1207.0	1172.8	34.2
Cushman	738.0	628.7	713.5	703.9	34.1
Mossyrock	778.5	661.0	775.2	695.3	83.3
Swift	1000.0	882.6	882.6	916.9	83.2
Yale	490.0	437.5	437.5	471.5	18.5
Merwin	239.6	227.9	227.9	230.2	9.4
Klamath	4143.3	4140.3	4141.8	4141.0	2.3
Lemolo	4148.5	4123.8	4123.8	4124.5	24.0
Timothy	3190.0	3180.0	3180.0	3171.8	18.2
Round Butte	1945.0	1938.0	1943.9	1940.0	5.0
Hills Creek	1541.0	1453.6	1541.0	1478.5	62.5
Green Peter	1010.0	959.9	1010.0	956.9	53.1
Foster	637.0	619.6	637.0	615.0	22.0
Cougar	1690.0	1558.0	1690.0	1581.3	108.7
Detroit	1563.0	1448.0	1563.5	1479.8	83.2
Lookout Point	926.0	829.7	926.0	856.0	70.0
Bridge River	2136.0	2136.0	2136.0	2079.9	56.1
Peace River	2205.0	2200.0	2200.0	2178.6	26.4