



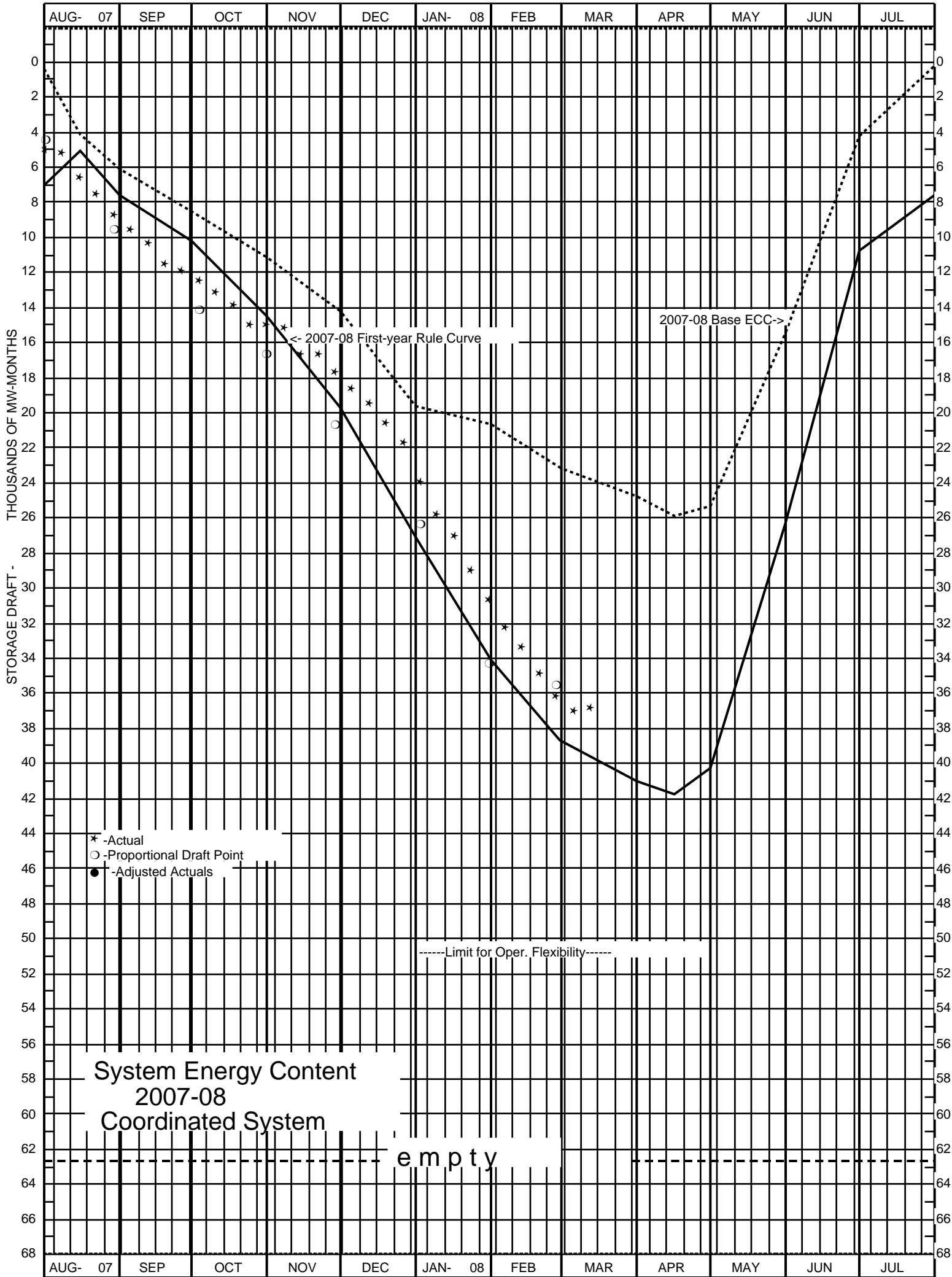
STATUS OF STORAGE ENERGY**

WEEK ENDING WEDNESDAY, MAR. 5, 2008

	STORAGE ENERGY DRAFT (MW-MOS.)			
	CRITICAL RULE CURVE	ENERGY CONTENT CURVE	PROPORTIONAL DRAFT LEVEL*	ACTUAL
PPL MONTANA	667	341	601	644
PACIFIC	1022	623	1082	898
PORTLAND GENERAL	886	495	883	854
PUGET POWER	1754	1086	1764	1694
AVISTA	1109	656	1023	1049
CHELAN	751	526	716	714
COLOCKUM	782	461	787	749
GRANT	2114	1248	2127	2026
DOUGLAS	63	37	63	60
COWLITZ	1910	1137	1928	1816
SEATTLE	2101	1721	2007	979
TACOMA	1055	142	295	686
EUGENE	98	50	95	99
FEDERAL COLUMBIA RIVER POWER SYSTEM	25695	14962	25781	24754
COORDINATED SYSTEM	40014	23493	39159	37031
N.W.P.P. (U.S. PORTION ONLY)	40294	23772	*****	37876

** BASED ON RESERVOIR SITUATION ONLY; DOES NOT INCLUDE ADJUSTMENTS FOR SYSTEM RIGHTS AND OBLIGATIONS WHICH MAY DIFFER FROM THOSE GIVEN IN OPERATING PROGRAM.

* BASED ON MAR 24, 2008 ACTUAL ENERGY REGULATION.



STORAGE RESERVOIRS DATA
Week Ending Wednesday, March 5, 2008

Reservoir	Full	Rule Curve	ECC	Actual	Feet Draft From Full
American Falls	4354.5	0.0	0.0	4344.0	10.5
Amer. F. - MW-Mos.	0.0			0.0	
Bear Lake	5923.6	0.0	0.0	5908.2	15.5
Hebgen	6534.9	6534.9	6534.9	6526.5	8.4
Madison Gauge	9.5	9.5	9.5	9.5	
Canyon Ferry	3797.0	3797.0	3797.0	3781.8	15.2
Hungry Horse	3560.0	3499.0	3551.3	3512.2	47.8
Flathead	2893.0	2885.4	2885.4	2884.0	9.0
Noxon	2331.0	2327.6	2327.6	2327.2	3.8
Pend Oreille	2062.5	2055.0	2055.0	2055.4	7.1
Libby	2459.0	2419.5	2419.5	2398.4	60.6
Duncan	1892.0	1807.5	1838.6	1809.9	82.1
Kootenay	1745.3	1741.9	1745.3	1741.1	4.2
Mica	2475.0	2401.1	2452.1	2411.6	63.4
Arrow Lakes	1444.0	1377.9	1401.7	1404.3	39.7
Coeur d'Alene	2128.0	2121.0	2121.0	2122.9	5.2
Long Lake	1536.0	1524.3	1524.3	1523.8	12.2
Grand Coulee	1290.0	1283.4	1283.4	1256.9	33.2
Chelan	1100.0	1082.5	1083.5	1083.6	16.4
Brownlee	2077.0	2042.6	2042.6	2033.0	44.0
Dworshak	1600.0	1509.3	1550.3	1520.1	79.9
Upper Baker	724.0	681.8	681.8	682.0	42.0
Lower Baker	438.0	395.5	395.5	383.4	54.6
White	543.0	543.0	543.0	541.3	1.7
Ross	1602.5	1523.1	1523.1	1724.7	-122.2
Alder	1207.0	1169.4	1207.0	1177.3	29.7
Cushman	738.0	625.2	715.1	704.9	33.1
Mossyrock	778.5	651.4	774.6	695.4	83.1
Swift	1000.0	878.3	884.2	916.9	83.2
Yale	490.0	436.6	441.1	471.5	18.5
Merwin	239.6	224.6	229.0	230.2	9.4
Klamath	4143.3	4140.5	4141.9	4141.0	2.3
Lemolo	4148.5	4123.8	4123.8	4124.5	24.0
Timothy	3190.0	3180.7	3180.7	3171.9	18.1
Round Butte	1945.0	1939.0	1944.3	1940.6	4.4
Hills Creek	1541.0	1460.4	1541.0	1488.0	53.0
Green Peter	1010.0	966.9	1010.0	970.9	39.2
Foster	637.0	623.1	637.0	616.0	21.0
Cougar	1690.0	1569.0	1690.0	1599.7	90.3
Detroit	1563.0	1457.5	1563.5	1493.5	69.5
Lookout Point	926.0	837.7	926.0	866.4	59.6
Bridge River	2136.0	2136.0	2136.0	2076.4	59.6
Peace River	2205.0	2200.0	2200.0	2176.8	28.2