

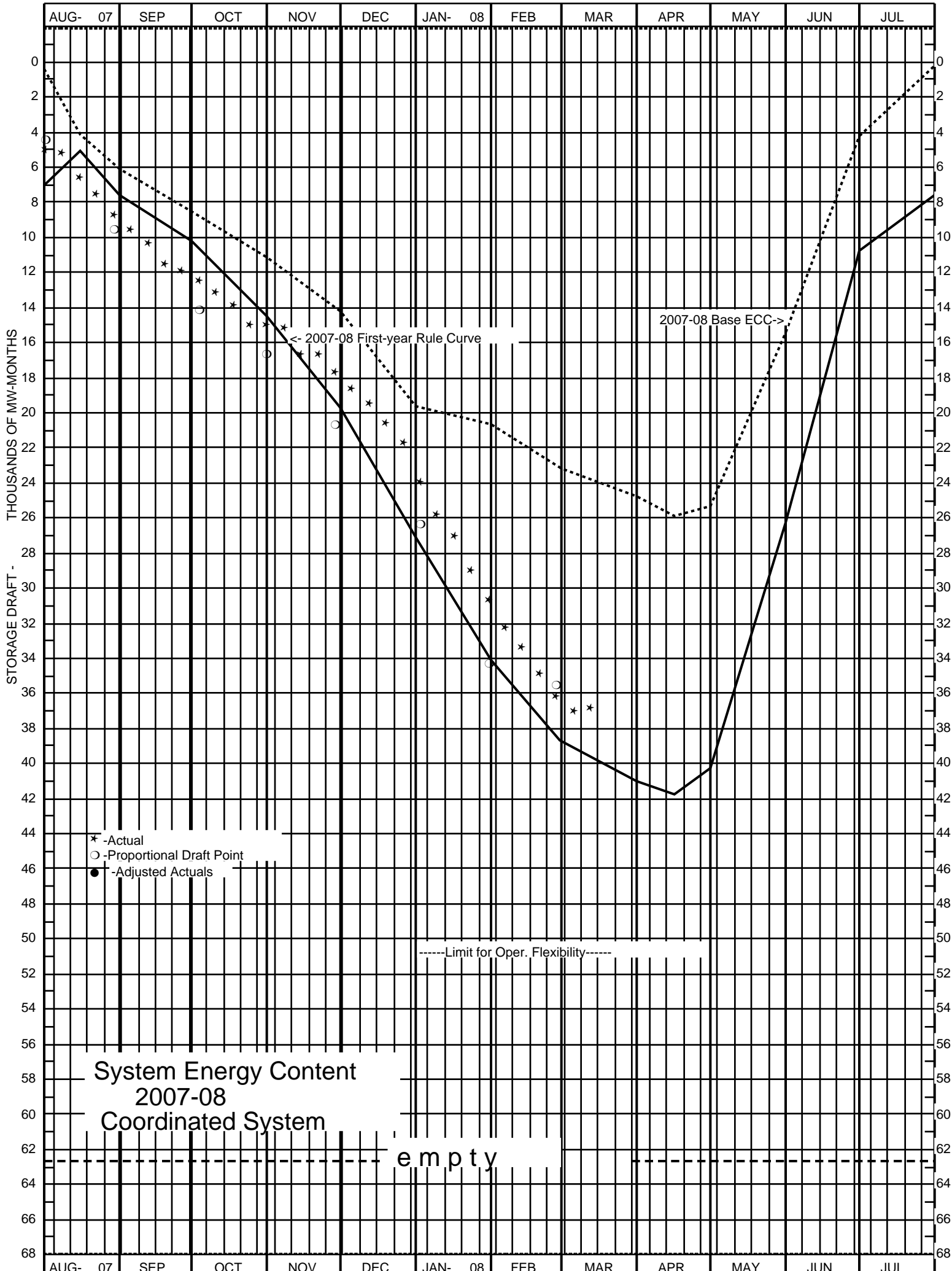


**STATUS OF STORAGE ENERGY\*\***  
 WEEK ENDING WEDNESDAY, MAR. 12, 2008

	STORAGE ENERGY DRAFT (MW-MOS.)			
	CRITICAL RULE CURVE	ENERGY CONTENT CURVE	PROPORTIONAL DRAFT LEVEL*	ACTUAL
PPL MONTANA	672	342	626	638
PACIFIC	1023	611	1087	898
PORTLAND GENERAL	892	505	889	847
PUGET POWER	1772	1098	1782	1693
AVISTA	1105	646	1033	1032
CHELAN	766	532	731	723
COLOCKUM	797	473	801	749
GRANT	2154	1278	2166	2026
DOUGLAS	64	38	65	60
COWLITZ	1945	1160	1960	1814
SEATTLE	2118	1729	2042	970
TACOMA	1087	146	281	678
EUGENE	96	50	93	97
FEDERAL COLUMBIA RIVER POWER SYSTEM	26085	15249	26168	24574
COORDINATED SYSTEM	40583	23864	39732	36806
N.W.P.P. (U.S. PORTION ONLY)	40877	24158	*****	37667

\*\* BASED ON RESERVOIR SITUATION ONLY; DOES NOT INCLUDE ADJUSTMENTS FOR SYSTEM RIGHTS AND OBLIGATIONS WHICH MAY DIFFER FROM THOSE GIVEN IN OPERATING PROGRAM.

\* BASED ON MAR 24, 2008 ACTUAL ENERGY REGULATION.



STORAGE RESERVOIRS DATA  
Week Ending Wednesday, March 12, 2008

Reservoir	Full	Rule Curve	ECC	Actual	Feet Draft From Full
American Falls	4354.5	0.0	0.0	4346.0	8.5
Amer. F. - MW-Mos.	0.0			0.0	
Bear Lake	5923.6	0.0	0.0	5908.2	15.5
Hebgen	6534.9	6534.9	6534.9	6526.5	8.4
Madison Gauge	9.5	9.5	9.5	9.5	
Canyon Ferry	3797.0	3797.0	3797.0	3781.8	15.2
Hungry Horse	3560.0	3497.2	3550.5	3510.8	49.2
Flathead	2893.0	2885.5	2885.5	2884.0	9.0
Noxon	2331.0	2328.5	2328.5	2328.3	2.7
Pend Oreille	2062.5	2055.0	2055.0	2055.4	7.1
Libby	2459.0	2418.8	2418.8	2397.8	61.2
Duncan	1892.0	1803.9	1838.7	1807.4	84.6
Kootenay	1745.3	1741.2	1745.3	1740.5	4.8
Mica	2475.0	2399.9	2449.3	2410.6	64.4
Arrow Lakes	1444.0	1377.9	1403.0	1402.7	41.3
Coeur d'Alene	2128.0	2121.7	2121.7	2123.5	4.5
Long Lake	1536.0	1527.4	1527.4	1524.0	12.0
Grand Coulee	1290.0	1281.1	1281.1	1255.3	34.7
Chelan	1100.0	1082.0	1083.6	1083.0	17.0
Brownlee	2077.0	2040.4	2040.4	2031.0	46.0
Dworshak	1600.0	1510.1	1553.1	1519.7	80.3
Upper Baker	724.0	687.4	687.4	682.6	41.4
Lower Baker	438.0	399.8	399.8	383.6	54.4
White	543.0	543.0	543.0	541.2	1.8
Ross	1602.5	1521.7	1522.6	1726.3	-123.8
Alder	1207.0	1169.6	1207.0	1178.9	28.1
Cushman	738.0	622.5	716.5	706.0	32.0
Mossyrock	778.5	643.4	773.5	695.9	82.6
Swift	1000.0	878.2	892.5	916.9	83.2
Yale	490.0	434.8	445.4	471.5	18.5
Merwin	239.6	220.5	231.0	230.2	9.4
Klamath	4143.3	4140.7	4142.1	4141.0	2.3
Lemolo	4148.5	4123.8	4123.8	4124.5	24.0
Timothy	3190.0	3181.7	3181.7	3172.3	17.7
Round Butte	1945.0	1940.4	1944.3	1941.2	3.8
Hills Creek	1541.0	1469.2	1541.0	1494.1	46.9
Green Peter	1010.0	972.7	1010.0	979.4	30.6
Foster	637.0	626.8	637.0	624.5	12.6
Cougar	1690.0	1583.0	1690.0	1611.6	78.4
Detroit	1563.0	1469.7	1563.5	1503.2	59.8
Lookout Point	926.0	847.9	926.0	872.7	53.3
Bridge River	2136.0	2136.0	2136.0	2073.5	62.5
Peace River	2205.0	2200.0	2200.0	2175.0	30.0